

Gogebic Community College 2021 ANNUAL COLLEGE SAFETY AND SECURITY REPORT

CAMPUS CRIME REPORT: 2020 STATISTICS WITH REQUIRED CLERY ACT POLICIES

**A Jeanne Clery Disclosure of Campus Security Policy and Campus Crime Statistics Act
report for the calendar year 2020. Release date: October 2021.**

gogebic
BOLD



Contents

Introduction	3
<u>The Security Report</u>	4
<u>Reporting of Crimes and Emergency Situations</u>	5
Gogebic Community College Crime Prevention	6
<u>Personal safety and property loss avoidance</u>	6
<u>Minors on Campus</u>	6
<u>Issuing Campus Notifications and Timely Warnings</u>	7
<u>Emergency Evacuation Procedure</u>	7
<u>Total Campus Evacuation</u>	8
<u>Michigan Sex Offender Registration Law</u>	8
Security and Access to Campus Facilities	9
Missing Persons Policy	9
<u>College and Community Resources</u>	10-11
<u>Personal Protection Orders</u>	12
<u>College Policy on Weapons</u>	12
<u>Substance Abuse Policy</u>	13
<u>Alcoholic Beverages and Drugs</u>	13
<u>Drugs and Alcohol: Risks</u>	13
<u>Disciplinary Sanctions</u>	14
<u>Where to Get Help</u>	15
<u>Title IX</u>	16
<u>Disclosure of Crime Statistics – Clery Act</u>	17-22
<u>GCC – Main Campus Map</u>	23
<u>GCC – Copper Country Center Map</u>	24
GCC – Skilled Trades Building Map	25
<u>Gogebic Community College Board of Trustees</u>	26

Introduction

Message from the President of Gogebic Community College



From the main campus in Ironwood, Michigan and the Copper Country Center in Houghton, Michigan, the GCC community welcomes you! Both of our locations are in a rural setting and provide a safe and secure learning environment for our students to succeed. Every member of GCC must take ownership of this priority and act accordingly. The College does not employ a police force but has access to local and state law enforcement along with emergency services very close to our two facilities. We are fortunate and enjoy a significant law enforcement presence and work collaboratively with local and state officers to provide training and prevention initiatives at our facilities.

Gogebic Community College is a premier educational institution that has a reputation for providing exceptional student learning in a safe environment. I invite you to schedule a time with our staff to see how Bold your future could be.

Respectfully,

George McNulty
President
Gogebic Community College

The Security Report

The Gogebic Community College Annual Security Report is required by federal law and contains policy statements and crime statistics for the College. The policy statements address the College's policies, procedures and programs concerning safety and security. Included in this report are crime statistics for 2020. These crime statistics reflect certain types of crimes that were reported to have occurred on campus or off campus within the confines of buildings or property owned or operated by the College. Public property within or immediately adjacent to the aforementioned College campuses are also included in these crime statistics. The crime categories listed are required to be reported by the Jeanne Clery Act of 1990, also known as the Crime Awareness and Campus Security

Act.

go
BOLD

Reporting of Crimes and Emergency Situations

Students, staff, faculty, community members, and guests are encouraged to report all crimes and suspicious behavior to the Gogebic County Sheriff Department promptly. At this time Gogebic Community College does not have a police department and relies on the Gogebic County Sheriff's Department, State Police, and Ironwood Police Department for all law enforcement responses. Additionally, the college encourages all individuals who report crimes on campus to notify the College and to safeguard inclusion in the annual crime statistics report, and to provide timely warning notices to the campus community when necessary. Gogebic Community College does have procedures for voluntary, confidential reporting of crimes through Ethical Advocate on the College's website:
<https://www.gogebic.edu/login/ethicaladvocate.html>.

Violations of law submitted through this service will be referred to law enforcement and when appropriate the Vice President of Academic Services and the College President for review. When a potential threat to the College community arises, timely warnings will be issued through established methods of communication.

To report a crime, emergency situation, or suspicious activity:

Contact:

911 from any College phone	
Gogebic County Sheriff	906-667-0203
State Police	906-224-9691
Ironwood Police	906-932-1234
Houghton County Sheriff	906-482-4411

In compliance with the Clery Act, the college has designated Campus Security reporting individuals throughout the institution.

The following locations and phone numbers are where Campus Security individuals will be found to facilitate reporting of crimes. Office Hours are M-F 7:30am-4:00pm

College President	906-307-1201 Main Campus, A-200A
Vice President of Academic Services	906-307-1216 Main Campus, B-023A
Career Counselor	906-307-1217 Main Campus, T-105G
Director of Human Resources	906-307-1324 Main Campus, A-208
Resident Community Manager	906-307-1267 Main Campus, L-132
Director of Off-Campus Operations	906-523-7932 Houghton Center Office

Gogebic Community College Crime Prevention

Gogebic Community College strives to provide safety and security measures on campus that protect students, staff, faculty, and community members. These measures and investments include utilization of digital video cameras, electronic door alarms, card access security, law enforcement training programs, and distribution of personal safety brochures.

Information regarding current crime trends, incidents, and statistics are made public to the campus community by having the data available on the college website, email notifications, and internal postings in common student areas.

Yearly, the College makes available, literature to students on crime prevention such as robbery, sex crimes, prevention of assaults, date rape, stalking, identity theft, active shooter, and weather emergencies.

Personal safety and property loss avoidance recommendations:

Use of "buddy system" when confronted with walking to the car alone at night or to any location at night alone.

Do not consume alcohol in excess and drive, or initiate relationships with individuals you are unfamiliar to you.

Trust your instincts and follow your internal voice.

Avoid posting personal information online that gives access to your schedule and daily habits.

Always lock your car and home/apartment doors.

Never invite individuals you are unfamiliar with to your Campus Suites room or apartment to protect yourself and your roommates.

Always be aware of your surroundings.

Never leave your personal property unattended or in your vehicle unlocked.

Minors on Campus

Board Policy 213

Children under 14 years of age must be accompanied by an adult at all times while on College property unless they are attending a College sponsored class or activity. Supervision by a parent, guardian, or appointed caretaker is required before and after the class or activity.

Issuing Campus Notifications and Timely Warnings

Board Policy 212

If a situation arises, either on or off campus, that, in the judgment of the President or his/her designee, in consultation with local law enforcement, constitutes an ongoing or continuing threat, a campus wide “timely warning” will be issued. The warning will be issued through the College’s early notification system to those students, faculty, and staff who have elected to opt into the system. In addition, a warning will be posted on the College website at

www.gogebic.edu.

Anyone with information warranting a campus alert/timely warning should report circumstances to:

College President	906-307-1201
Vice President of Academic Services	906-307-1216
Director of Human Resources	906-307-1324
Director of Off-Campus Operations	906-523-7932

Or local law enforcement:

Gogebic County Sheriff Department	906-667-0203
Ironwood Police	906-932-1234
Michigan State Police	906-224-9691
Houghton Police (Off-Campus)	906-482-2121

Emergency Response and Evacuation Procedures

Board Policy 576

In the event of an emergency situation that poses and immediate threat to the health or safety of some or all members of the College community, notification of the emergency situation will be given through voice and text messages to phones and email messages via the College’s school messenger system. Notification will also be given through the College’s website and various media outlets, if appropriate. Members of the College community must sign up for the emergency notification system in the College website under the Login tab and My-GCC. For more information on the school messenger system, please contact the Human Resources Office at 906-307-1324.

The College’s Emergency Management Team consists of the President and the Vice President of Academic Services. The Human Resource Director and the Director of Off-Campus Operations are alternate members. One or more members of the Emergency Management Team will consult with local law enforcement to determine whether an emergency situation exists. In

confirmed, one or more members of the Emergency Management Team will determine the content of the message to be sent and will use some or all the systems described above to communicate the threat to the College community or to the appropriate segment of the community, if the threat is limited to a particular building or segment of the population.

A member of the Emergency Management Team will, immediately, and considering the safety of the community, initiate the notification system, unless issuing a notification will, in the judgement of law enforcement, compromise the efforts to assist a victim or to contain, respond to, or otherwise mitigate the emergency.

College staff and faculty have access to the College's Emergency Manual. Students and staff have access to evacuation routes posted next to the door of every office and classroom.

Total Campus Evacuations

Announcements of a total campus evacuation will be made over the College Emergency Alert Phone System.

Remain calm and walk - do not run.

Unless instructions are given not to use elevators, persons with disabilities should use the building elevators to reach the ground floor. Non-disabled persons capable of using stairs should avoid the elevators, making the elevators more available to persons with disabilities.

In the event elevators cannot be used, persons with disabilities should proceed to the stairway landings and wait for emergency rescue personnel. If a student has a personal attendant, they should discuss emergency evacuation plans with their attendant in advance. Emergency personnel responding to the building will be checking the stairway landings upon their arrival for a person in need of assistance.

Exit the building and go to your vehicle.

Exercise caution when leaving the parking areas.

Follow evacuation route instructions given by police or fire personnel.

Michigan Sex Offender Registration Law and Information

Board Policy 214

The "Campus Sex Crimes Prevention Act" is a federal law enacted on October 28, 2000, that provides for the tracking of convicted, registered sex offenders enrolled as a student at institutions of higher education or working or volunteering on campus. Federal law requires institutions of higher education to issue a statement advising the campus community where law enforcement information provided by a state concerning registered sex offenders may be obtained. It also requires sex offenders already required to register in a state to provide notice

of each institution of higher education in that state at which the person is employed, carried a vocation, or is a student.

In the state of Michigan, convicted sex offenders must register with the Public Sex Offender Registry maintained by the Michigan State Police. The Michigan State Police Public Sex Offender Registry can be found at: <http://www.mipsor.state.mi.us/>

Campus Access and Security

Board Policy 575

Gogebic Community College provides access to the public and students through published hours of operation. During these hours the campus is open to the public and student body for educational and recreational activities. Campus buildings are closed and locked during the hours of 9pm until 6am. Access to closed or locked buildings is restricted to authorized college employees, adjuncts, or contracted vendors only and for the safety of college personnel all others will not be allowed to stay unless supervised by authorized personnel.

College issued keys and access cards are assigned to only College employees and possession by an unauthorized individual is against College policy. The Vice President of Business Services in conjunction with the Human Resource Director authorizes keys and access cards for all employees.

The Student Suites housing facility consists of 24 four-bed suite and access is granted by access cards on the exterior doors and keys for room doors. The Director of Student Housing facilitates the authorization of student keys and access cards.

Missing Persons Policy

Board Policy 489

This policy contains the official notification for Gogebic Community College concerning missing students and guests, including those who reside in on-campus housing.

“Missing” is defined as when a person has not been seen or made any contact with another person and the person’s location is unknown and unexplainable for a period of time that is regarded by knowledgeable parties as highly unusual or suspicious concerning the person’s usual pattern of behavior, plan, or routines. Gogebic defines the time as 24 hours or more.

All students at Gogebic Community College who are living on campus are given the opportunity to complete a missing person contact information form.

1. Anyone suspecting a student from Campus Suites is missing should report that information to the GCC Housing Manager (906) 285-0452. The Housing Manager will report to the Vice President of Student Services. In the event the missing student does not reside in Campus Suites, the report is made directly to the Vice President of Student Services (906) 285-2398.
2. The Vice President of Student Services will refer the information to the Gogebic County Sheriff’s Office.
3. If the student is under 18 years of age, parents/guardians will be notified.
4. The College will cooperate fully with the Gogebic County Sheriff’s office in the investigation.
5. If the missing student has provided a missing person contact information form, the designated person will be contacted within 24 hours of the college being notified of the missing person.
 - a. This contact information will be registered confidentially and is only accessible to authorized campus officials. It can be disclosed to the Sheriff’s Office.

College and Community Resources

Emergency Services

Gogebic County Sheriff's Dept. – 906-667-0203
Hurley Police Dept. – 715-561-2345
Houghton Police – 906-482-2121
Hancock Police – 906-482-3100
Houghton County Sheriff – 906-492-4411
Calumet Police – 906-337-2345
Laurium Police – 906-337-4000
Lake Linden Police – 906-296-9911
Lac Vieux Desert Tribal Police – 906-358-4313
Aspirus Grand View Hospital – 906-932-2525
Michigan State Police – 800-525-5555
Nationwide Poison Control – 800-222-1222

Health Care

Aspirus Grand View Hospital (Ironwood) – 906-932-2525
Aspirus (Houghton) – 906-337-6500
Portage Hospital – 906-483-1000
MI Dept. of Human Services – 906-663-6200
WI Dept. of Human Services 715-561-3636
Lac Vieux Desert Health Center – 906-358-4587
Veterans Outreach Clinic – 906-932-0032
Western U.P. Health Dept. – 906-667-0200

Alcohol/Drug Abuse

Marquette General Hospital Rehab – 906-225-3186
Western UP Substance Abuse Services – 888-482-7710
Alcoholics Anonymous – Houghton – 906-482-7778

College and Community Resources cont.

Counseling/Emotional Crisis

Gogebic Community College Counselor – 906-932-4231 ext. 217

Domestic Violence Escape (DOVE) – 906-932-0310

Barbara Kettle Gundlach Shelter Home – 906-337-5623

Community Mental Health – 888-906-9060

Copper Country Mental Health Services 906-482-9400

24-hour crisis line – (800) 526-5059

Copper Island Behavioral Health – 906-492-9440

Western UP Substance Abuse Services – 906-482-7710

Michigan Coalition to end Domestic and Sexual
Violence – 517-347-7000

Dial Help – 906-482-4357

National Domestic Violence Hotline – 800-265-2000

Phoenix House Counseling 906-663-2141

Crisis Center – 866-317-9362

Legal Assistance

Legal Services of Northern MI – 800-872-8432

State Bar of MI Legal Svcs – 800-968-0738

Suicide Prevention

Community Mental Health Crisis Line – 800-348-0032

Dial HELP – 800-562-7622

Suicide Prevention Hotline – 800-273-8255

Rape Aggression Defense (RAD) Program

906-487-2216

Veteran Services

Veteran Counselors Office – 906-667-1110

Veteran Outreach Clinic – 906-932-0032

Personal Protection Orders

Your legal rights include the right to go to court and file a petition requesting a Personal Protection Order (Domestic Relationship PPO, Non-Domestic (Stalking) PPO, Non-Domestic (Sexual Assault) PPO) to protect you and other members of your household from abuse. The order would legally restrain or enjoin an individual from one or more of the following acts:

- Entering your home or other places you occupy.
- Assaulting, attacking, beating, molesting, or wounding you or another person.
- Threatening to kill or physically injure you or another person.
- Removing your children from you if you have legal custody of them.
- Buying or having a gun.
- Interfering with you at your job or school or acting in a way that harms your job or school relationships or environment.
- Stalking
- Any other specific act or behavior that interferes with your freedom or makes you reasonably afraid of something violent happening to you (this could include other specific behaviors that you want the court to prohibit).

You do not need an attorney to obtain a Personal Protection Order. Forms are available at the Gogebic County Clerk's Office.

College Policy on Weapons

No person, other than law enforcement personnel or a person authorized by the College President, shall possess a weapon on property owned, leased, or otherwise in the possession of Gogebic Community College. Any and all exemptions are listed in Board Policy Series 211.

The term "weapon" shall mean: (1) firearms, including tasers and stun guns; (2) explosives or explosive devices including, but not limited to any fireworks and firearm ammunition; (3) a knife, stabbing instrument, brass knuckles, blackjack, sap, nun chucks, club; (4) other object specifically designed or customarily possessed for use as a weapon; (5) an object or substance, not normally considered a weapon, that is used in a threatening or harmful manner likely to cause bodily injury or death.

Substance Abuse Policy

Possession or use of alcohol or drugs on Gogebic Community College's campuses or at any College function is prohibited. The following excerpts from the Gogebic Community College Handbook on Rights and Responsibilities explain the College's regulations regarding alcohol and drugs:

Alcoholic Beverages

Board Policy 466

The use or possession of any alcoholic or intoxicating beverages is prohibited on campus, except in situations where the college provides catered events for groups in the Lindquist Center.

Under no circumstances will alcoholic beverages be served at student events held on any GCC Campus.

Drugs

Board Policy 469

The possession, sale or use of illegal controlled substances on campus or at college-sponsored events or classes shall not be tolerated at Gogebic Community College. Students violating this policy shall be subject to disciplinary action and dismissal.

Drugs and Alcohol: Risks

Regular use of alcohol and other drugs, including marijuana, stimulants, depressants, cocaine, anabolic steroids, opiates, hallucinogens, etc., may lead to:

- Psychological and/or Physical dependence
- Impaired learning ability, memory, ability to solve complex problems
- Inability to perform sexually, infertility problems
- Increased risk of sexually transmitted diseases (including AIDS)
- Complications due to the combination of prescription medication and other drugs/alcohol
- Death, coma or toxic reactions, especially when combining alcohol with any other drug, including over-the-counter medicine or prescriptions
- Guilt/regret over activities performed while under the influence of alcohol/drugs, i.e., regretting sexual encounters, fighting, risk-taking, legal difficulties
- Organic damage to the brain, cardiovascular system, liver, etc.
- Increased risk of cancer
- Fetal Alcohol Syndrome, birth or genetic defects
- Psychosis (hallucinations, loss of contact with reality, extreme changes in personality)
- Other physiological, psychological, or interpersonal problems

Disciplinary Sanctions

The College for violations of these rules will take disciplinary action. Depending upon the nature of the violation, it may take the form of arrest and referral for prosecution, dismissal from the College, probation, temporary or permanent suspension from a class or program, denial of honors, certificate, or degree, restitution, or restrictions on activities or privileges.

Legal Sanctions

Federal

Federal law provides criminal and civil penalties for unlawful possession or distribution of a controlled substance. Under the controlled Substance Act, as well as other related federal laws, the penalties for controlled substance violations include, but are not limited to, incarceration, fines, potential for the forfeiture of property used in possession or to facilitate possession of a controlled substance (which may include homes, vehicles, boats, aircrafts, and any other personal or real property), ineligibility to possess a firearm, and potential ineligibility to receive federal benefits (such as student loans and grants).

State

Under current Michigan state law, "a person shall not knowingly or intentionally possess or distribute a controlled substance." If an individual is found guilty of a violation of the state law, they may be subject to large fines and imprisonment.

A minor may not "purchase or attempt to purchase alcoholic liquor, consume or attempt to consume alcoholic liquor, possess or attempt to possess alcoholic liquor, or have any bodily alcohol content." Violation of the law may subject a minor to fines, participation in a substance abuse program or treatment center, imprisonment, community service hours, and/or out of pocket expenses related to required substance abuse screenings.

Where to Get Help

Gogebic Community College recognizes that alcoholism and drug abuse can directly affect student success inside and outside the classroom. If you, or someone you know, need help or information regarding alcohol and drug abuse, here are some resources:

College Resources

Counseling Office
ACES Center (Main Campus)
906-932-4231, ext. 217
Houghton Center call for appointment

Vice President of Academic Services
B-023A (Main Campus)
906-932-4231, ext. 216
Houghton Center call for appointment

Outside Resources

Community Mental Health
906-229-6100
Aspirus Ironwood Hospital
906-932-3493

Alcoholics Anonymous
906-249-4430
Western UP Substance Abuse
906-482-7710

TITLE IX

Gogebic Community College creates an inclusive environment for all individuals regardless of sex, gender identity, sexual orientation, age, race, national origin, ethnicity, ability, or military status in the execution of its educational programs, activities, employment, daily operations, and admission practices.

ABOUT TITLE IX

Title IX of the Education Amendments of 1972 states:

“No person in the United States shall, on the basis of sex (gender), be excluded from participation in, be denied the benefits of, or be subjected to discrimination under any education program or activity receiving federal financial assistance.”

The Title IX Coordinator has primary responsibility for coordinating college Title IX compliance efforts, including oversight of college personnel and student related policies such as sexual misconduct, harassment, and non-discrimination; coordination of training; and administration of grievance procedures.

Glen Guilbault, Title IX Coordinator

Gleng@gogebic.edu

Office Phone (906) 523-7930

Office hours 7:30-4:00 M-F EST

Cell Phone (906) 285-0089

Ashley Paquette, Title IX Deputy Coordinator

ashleyp@gogebic.edu

Office Phone (906) 932-4231 ext. 324

Office hours 8:00-4:30 M-F CST

Disclosure of Crime Statistics – Clery Act

Congress enacted the Crime Awareness and Campus Security Act in 1990, which amended the Higher Education Act of 1965 and is now known as the Jeanne Clery Disclosure of Campus Security Policy and Campus Crime Statistics Act.

Gogebic Community College follows the requirements of the Clery Act by timely notifications to the campus community of certain crimes or incidents that are (1) reported to local law enforcement and (2) considered by the institution to represent a serious or continuing threat to students and employees. Furthermore, the Act requires the College to compile and publish a list of crime statistics.

The Institutional Researcher for Gogebic Community College prepares this report to comply with the Jeanne Clery Disclosure of Campus Security Policy and Crime Statistics Act. Additionally, the college reports all fire incidents. Local law enforcement is asked yearly to provide information that is necessary to fully complete this report. Notice of this report is provided to students, staff, and faculty annually. This report is also placed on the College's website for public review. Definitions from the Uniform Crime Reporting Handbook below:

Murder and Non-Negligent Manslaughter

The willful (non-negligent) killing of one human being by another.

Manslaughter by Negligence

The killing of another person through gross negligence.

Aggravated Assault

An unlawful attack by one person upon another for the purpose of inflicting severe or aggravated bodily injury. This type of assault usually is accompanied by the use of a weapon or by means likely to produce death or great bodily harm. It is not necessary that injury result from an aggravated assault when a gun, knife, or other weapon is used which could or probably would result in a serious potential injury if the crime were successfully completed.

Robbery

The taking or attempting to take anything of value from the care, custody, or control of a person or persons by force or threat of force, violence, and/or causing the victim fear.

Burglary

The unlawful entry of a structure to commit a felony or a theft. For reporting purposes this definition includes: unlawful entry with intent to commit a larceny or a felony; breaking and entering with intent to commit a larceny; housebreaking; safecracking; and all attempts to commit any of the aforementioned.

Motor Vehicle Theft

The theft or attempted theft of a motor vehicle. (Classify as motor vehicle theft all cases where automobiles are taken by persons not having lawful access even though the vehicles are later abandoned-including joy riding).

Arson

Any willful or malicious burning or attempt to burn, with or without intent to defraud, a dwelling, house, public building, motor vehicle or aircraft, personal property, etc.

Domestic Violence

A pattern of learned behavior in which one person uses physical, sexual, and emotional abuse to control another person against a household or family member.

Dating Violence

Dating violence is a pattern of assaultive and controlling behaviors that one person uses against another in order to gain or maintain power and control in the relationship. The abuser intentionally behaves in ways that cause fear, degradation and humiliation to control the other person. Forms of abuse can be physical, sexual, emotional and psychological.

Stalking

Behavior in which a person repeatedly engages in conduct directed at a specific person that places that person in reasonable fear of his or her safety or the safety of others. "Conduct" means two or more acts, including, but not limited to, acts in which the stalker directly, indirectly, or through third parties, by any action, method, device, or means, follows, monitors, observes, threatens, or communicates to or about a person, or interferes with a person's property.

Hate Crime

An offense committed against a person or property (any Part 1 Crime and additional crimes below) which is motivated by the offender's bias. Bias is a preformed negative opinion or attitude toward a group of persons based on their race, gender, gender identity, religion, sexual orientation, ethnicity/national origin, or disability.

Part 1 crimes are murder, manslaughter, sex offenses, robbery, aggravated assault, burglary, motor vehicle theft, and arson. Additionally, non-Part 1 crimes reportable with a hate crime bias are larceny-theft, simple assault, intimidation and vandalism/destruction of property.

Weapons Law Violations

The violation of laws or ordinances dealing with weapon offenses, regulatory in nature, such as: manufacture, sale, or possession of deadly weapons; carrying deadly weapons, concealed or

openly; furnishing deadly weapons to minors; aliens possessing deadly weapons; all attempts to commit any of the aforementioned.

Drug Law Violations

Violations of state and local laws relating to the unlawful possession, sale, use, growing, manufacturing, and making of narcotic drugs. The relevant substances include: opium or cocaine and their derivatives (morphine, heroin, codeine); marijuana; synthetic narcotics (demerol, methadones); and dangerous non-narcotic drugs (barbiturates, benzedrine).

Liquor Law Violations

The violation of laws or ordinance prohibiting: the manufacture, sale, transporting, furnishing, possessing of intoxicating liquor; maintaining unlawful drinking places; bootlegging; operating a still; furnishing liquor to minor or intemperate person; using a vehicle for illegal transportation of liquor; drinking on a train or public conveyance; all attempts to commit any of the aforementioned. (Drunkenness and driving under the influence are not included in this definition.)

Sex Offenses

Any sexual act directed against another person, forcibly and/or against that person's will; or not forcibly or against the person's will where the victim is incapable of giving consent.

Rape (Forcible)

The penetration, no matter how slight, of the vagina or anus with any body part or object, or oral penetration by a sex organ of another person, without the consent of the victim.

Forcible Fondling

The touching of the private body parts of another person for the purpose of sexual gratification, forcibly and/or against that person's will; or, not forcibly or against the person's will where the victim is incapable of giving consent because of his/her youth or because of his/her temporary or permanent mental or physical incapacity.

Incest

Non-forcible sexual intercourse between persons who are related to each other within the degrees wherein marriage is prohibited by law.

Statutory Rape

Non-forcible sexual intercourse with a person who is under the statutory age of consent.

On-Campus

Defined as (1) Any building or property owned or controlled by an institution within the same reasonably contiguous geographic area and used by the institution in direct support of or in a manner related to the institution's educational purposes, including residence halls; and (2) Any building or property that is within or reasonably contiguous to the area identified in paragraph (1), that is owned by the institution but controlled by another person, is frequently used by students and supports institutional purposes (such as a food or retail vendor).

Non-Campus Building Or Property


Defined as (1) Any building or property owned or controlled by a student organization that is officially recognized by the institution; or (2) Any building or property owned or controlled by an institution that is used in direct support of or in relation to the institution's educational purposes, is frequently used by students, and is not within the same reasonably contiguous geographic area of the institution.

Public Property

Defined as All public property, including thoroughfares, streets, sidewalks, and parking facilities, that is within the campus or immediately adjacent to and accessible from the campus.



Disclosure of Crime Statistics—Clery Act

Crime Summaries for Gogebic Community College Main Campus (Ironwood, MI)												
Reportable Events	2018				2019				2020			
	On-Campus*	Non-campus buildings or property**	Student Housing (On-Campus)	Public Property***	On-Campus*	Non-campus buildings or property**	Student Housing (On-Campus)	Public Property***	On-Campus*	Non-campus buildings or property**	Student Housing (On-Campus)	Public Property***
Criminal Offenses												
Murder	0	0	0	0	0	0	0	0	0	0	0	0
Negligent Manslaughter	0	0	0	0	0	0	0	0	0	0	0	0
Sex Offenses - Forcible	0	0	0	0	0	0	0	0	0	0	0	0
Sex Offenses - Non-forcible	0	0	0	0	0	0	0	0	0	0	0	0
Incest	0	0	0	0	0	0	0	0	0	0	0	0
Statutory Rape	0	0	0	0	0	0	0	0	0	0	0	0
Robbery	0	0	0	0	0	0	0	0	0	0	0	0
Aggravated Assault	0	0	0	0	0	0	0	0	0	0	0	0
Burglary	0	0	0	0	0	0	0	0	0	0	0	0
Motor Vehicle theft	0	0	0	0	0	0	0	0	0	0	0	0
Arson	0	0	0	0	0	0	0	0	0	0	0	0
Hate Crimes												
Murder/Non-negligent manslaughter	0	0	0	0	0	0	0	0	0	0	0	0
Negligent Manslaughter	0	0	0	0	0	0	0	0	0	0	0	0
Sex Offenses - Forcible	0	0	0	0	0	0	0	0	0	0	0	0
Sex Offenses - Non-forcible	0	0	0	0	0	0	0	0	0	0	0	0
Incest	0	0	0	0	0	0	0	0	0	0	0	0
Statutory Rape	0	0	0	0	0	0	0	0	0	0	0	0
Robbery	0	0	0	0	0	0	0	0	0	0	0	0
Aggravated Assault	0	0	0	0	0	0	0	0	0	0	0	0
Burglary	0	0	0	0	0	0	0	0	0	0	0	0
Motor Vehicle theft	0	0	0	0	0	0	0	0	0	0	0	0
Arson	0	0	0	0	0	0	0	0	0	0	0	0
Simple assault	0	0	0	0	0	0	0	0	0	0	0	0
Larceny-theft	0	0	0	0	0	0	0	0	0	0	0	0
Intimidation	0	0	0	0	0	0	0	0	0	0	0	0
Destruction/damage/vandalism of property	0	0	0	0	0	0	0	0	0	0	0	0
VAWA Offenses (Violence Against Women Act)												
Domestic violence	0	0	0	0	0	0	0	0	0	0	0	0
Dating violence	0	0	0	0	0	0	0	0	0	0	0	0
Stalking	0	0	0	0	0	0	0	0	0	0	0	0
Arrests												
Weapons: carrying, possessing, etc.	0	0	0	0	0	0	0	0	0	0	0	0
Drug abuse violations	0	0	0	0	0	0	0	0	0	0	0	0
Liquor law Violations	0	0	0	0	0	0	0	0	0	0	0	0
Disciplinary Actions												
Weapons: carrying, possessing, etc.	0	0	0	0	0	0	0	0	0	0	0	0
Drug abuse violations	0	0	0	0	0	0	0	0	0	0	0	0
Liquor law Violations	0	0	0	0	0	0	0	0	0	0	0	0
Fire Summary												
	Fires	Injuries	Deaths		Fires	Injuries	Deaths		Fires	Injuries	Deaths	
Campus Suites Residence Hall	1	0	0		0	0	0		0	0	0	
<p>*On-Campus Definition: Any building or property owned or controlled by an institution within the same reasonably contiguous geographic area and used by the institution in direct support of, or in a manner related to, the institution's educational purposes, including residence halls; and Any building or property that is within or reasonably contiguous to paragraph (1) of this definition, that is owned by the institution but controlled by another person, is frequently used by students, and supports institutional purposes (such as a food or other retail vendor).</p> <p>**Non-Campus Definition: Any building or property owned or controlled by a student organization that is officially recognized by the institution; or Any building or property owned or controlled by an institution that is used in direct support of, or in relation to, the institution's educational purposes, is frequently used by students, and is not within the same reasonably contiguous geographic area of the institution.</p> <p>***Public Property Definition: All public property, including thoroughfares, streets, sidewalks, and parking facilities, that is within the campus, or immediately adjacent to and accessible from the campus.</p>												

**Crime Summaries for Gogebic Community College
Houghton, MI Location**



Reportable Events	2018				2019				2020			
	On-Campus*	Non-campus buildings	Student Housing (On-Campus)	Public Property ***	On-Campus*	Non-campus buildings	Student Housing (On-Campus)	Public Property ***	On-Campus*	Non-campus buildings	Student Housing (On-Campus)	Public Property ***
Criminal Offenses												
Murder	0	0	N/A	0	0	0	N/A	0	0	0	N/A	0
Negligent Manslaughter	0	0	N/A	0	0	0	N/A	0	0	0	N/A	0
Sex Offenses - Forcible	0	0	N/A	0	0	0	N/A	0	0	0	N/A	0
Sex Offenses - Non-forcible	0	0	N/A	0	0	0	N/A	0	0	0	N/A	0
Incest	0	0	N/A	0	0	0	N/A	0	0	0	N/A	0
Statutory Rape	0	0	N/A	0	0	0	N/A	0	0	0	N/A	0
Robbery	0	0	N/A	0	0	0	N/A	0	0	0	N/A	0
Aggravated Assault	0	0	N/A	0	0	0	N/A	0	0	0	N/A	0
Burglary	0	0	N/A	0	0	0	N/A	0	0	0	N/A	0
Motor Vehicle theft	0	0	N/A	0	0	0	N/A	0	0	0	N/A	0
Arson	0	0	N/A	0	0	0	N/A	0	0	0	N/A	0
Hate Crimes												
Murder/Non-negligent manslaughter	0	0	N/A	0	0	0	N/A	0	0	0	N/A	0
Negligent Manslaughter	0	0	N/A	0	0	0	N/A	0	0	0	N/A	0
Sex Offenses - Forcible	0	0	N/A	0	0	0	N/A	0	0	0	N/A	0
Sex Offenses - Non-forcible	0	0	N/A	0	0	0	N/A	0	0	0	N/A	0
Incest	0	0	N/A	0	0	0	N/A	0	0	0	N/A	0
Statutory Rape	0	0	N/A	0	0	0	N/A	0	0	0	N/A	0
Robbery	0	0	N/A	0	0	0	N/A	0	0	0	N/A	0
Aggravated Assault	0	0	N/A	0	0	0	N/A	0	0	0	N/A	0
Burglary	0	0	N/A	0	0	0	N/A	0	0	0	N/A	0
Motor Vehicle theft	0	0	N/A	0	0	0	N/A	0	0	0	N/A	0
Arson	0	0	N/A	0	0	0	N/A	0	0	0	N/A	0
Simple assault	0	0	N/A	0	0	0	N/A	0	0	0	N/A	0
Larceny-theft	0	0	N/A	0	0	0	N/A	0	0	0	N/A	0
Intimidation	0	0	N/A	0	0	0	N/A	0	0	0	N/A	0
Destruction/damage/vandalism of property	0	0	N/A	0	0	0	N/A	0	0	0	N/A	0
VAWA Offenses (Violence Against Women Act)												
Domestic violence	0	0	N/A	0	0	0	N/A	0	0	0	N/A	0
Dating violence	0	0	N/A	0	0	0	N/A	0	0	0	N/A	0
Stalking	0	0	N/A	0	0	0	N/A	0	0	0	N/A	0
Arrests												
Weapons: carrying, possessing, etc.	0	0	N/A	0	0	0	N/A	0	0	0	N/A	0
Drug abuse violations	0	0	N/A	0	0	0	N/A	0	0	0	N/A	0
Liquor law Violations	0	0	N/A	0	0	0	N/A	0	0	0	N/A	0
Disciplinary Actions												
Weapons: carrying, possessing, etc.	0	0	N/A	0	0	0	N/A	0	0	0	N/A	0
Drug abuse violations	0	0	N/A	0	0	0	N/A	0	0	0	N/A	0
Liquor law Violations	0	0	N/A	0	0	0	N/A	0	0	0	N/A	0

Fire Summary	Fires	Injuries	Deaths
Campus Suites Residence Hall	N/A	N/A	N/A

*** On-Campus Definition:** Any building or property owned or controlled by an institution within the same reasonably contiguous geographic area and used by the institution in direct support of, or in a manner related to, the institution's educational purposes, including residence halls; and Any building or property that is within or reasonably contiguous to paragraph (1) of this definition, that is owned by the institution but controlled by another person, is frequently used by students, and supports institutional purposes (such as a food or other retail vendor).

****Non-Campus Definition:** Any building or property owned or controlled by a student organization that is officially recognized by the institution; or Any building or property owned or controlled by an institution that is used in direct support of, or in relation to, the institution's educational purposes, is frequently used by students, and is not within the same reasonably contiguous geographic area of the institution.

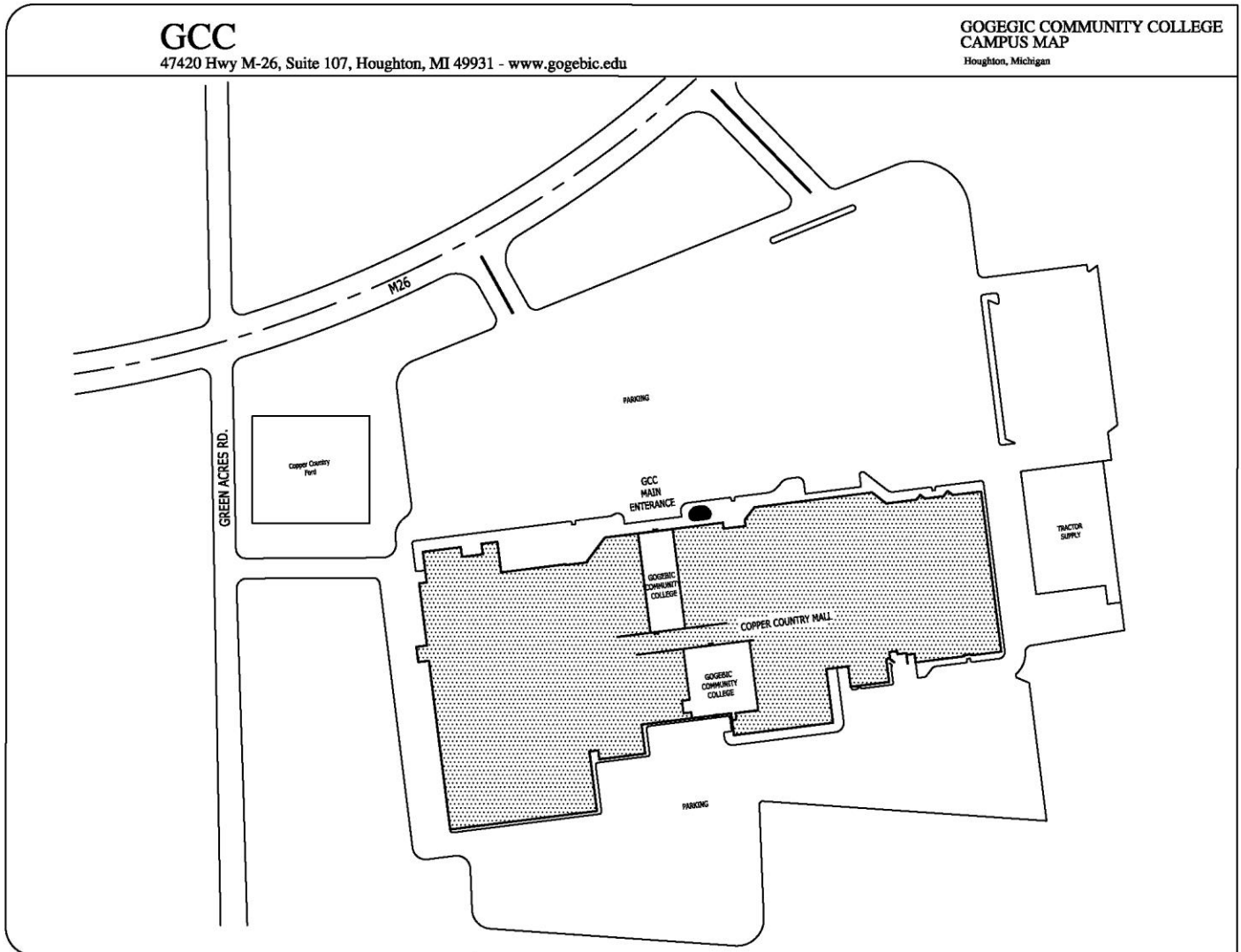
*****Public Property Definition:** All public property, including thoroughfares, streets, sidewalks, and parking facilities, that is within the campus, or immediately adjacent to and accessible from the campus.

GOGEBIC COMMUNITY COLLEGE – MAIN CAMPUS 4946 JACKSON ROAD, IRONWOOD, MI 49938 (906) 932-4231



GOGEBIC COMMUNITY COLLEGE – COPPER COUNTRY CAMPUS

47420 Hwy M-26, SUITE 107, HOUGHTON, MI 49931 (906) 482-6690

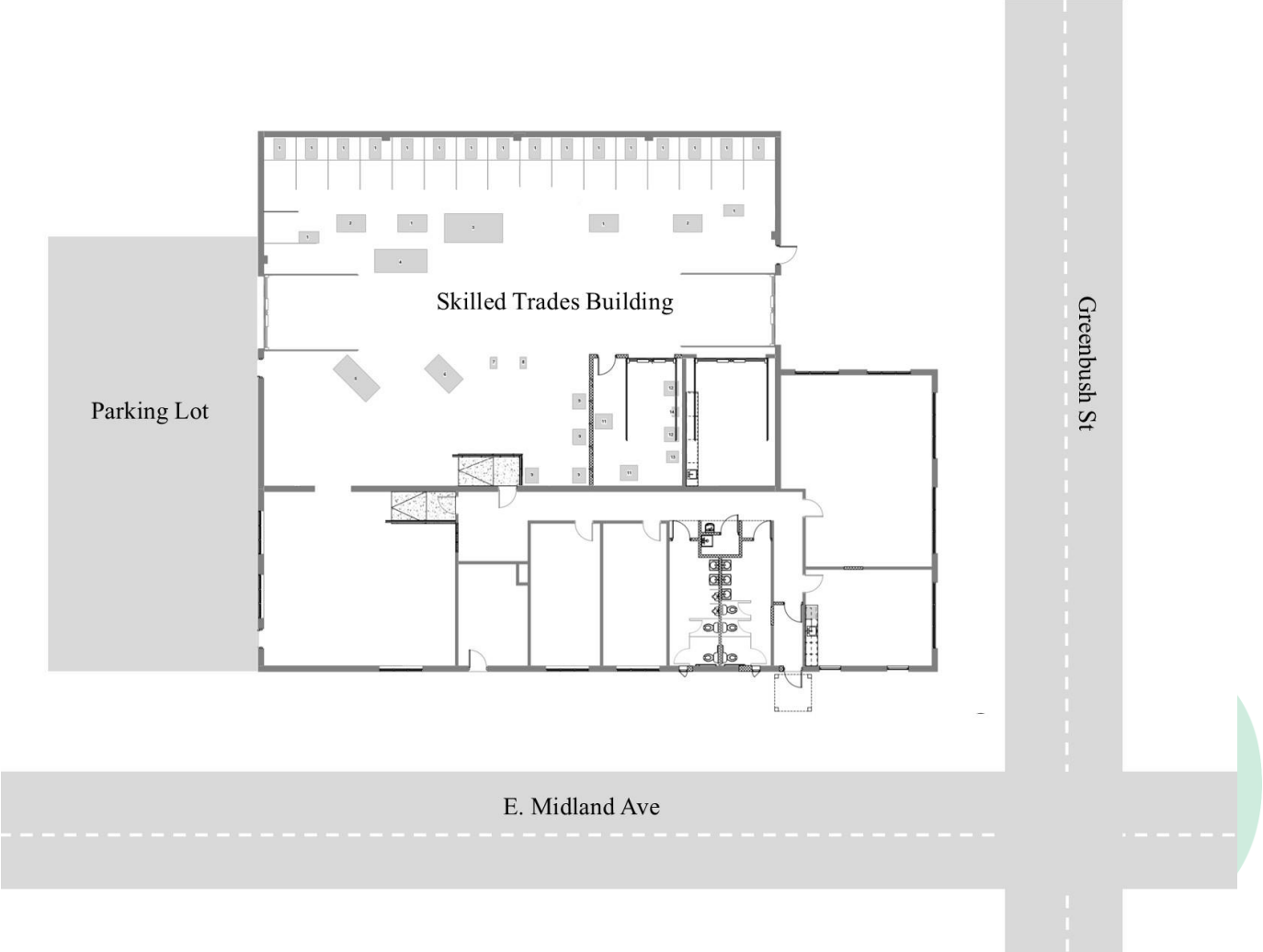


GCC

47420 Hwy M-26, Suite 107, Houghton, MI 49931 - www.gogebic.edu

GOGEBIC COMMUNITY COLLEGE
CAMPUS MAP
Houghton, Michigan

GOGEBIC COMMUNITY COLLEGE – SKILLED TRADES BUILDING
250 MIDLAND AVENUE, IRONWOOD, MI 49938 (906) 932-4231



Gogebic Community College Board of Trustees



Eric Fitting, Board Member
Thomas Brown, Board Member
Robert Burchell, Board Member
Tim Kolesar, Board Treasurer
William Malloy, Board Vice-Chairman
John Lupino, Board Chairman
Susan Beals, Board Secretary

